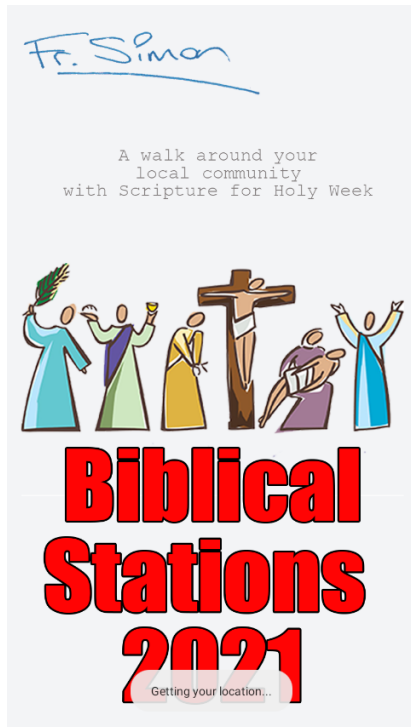


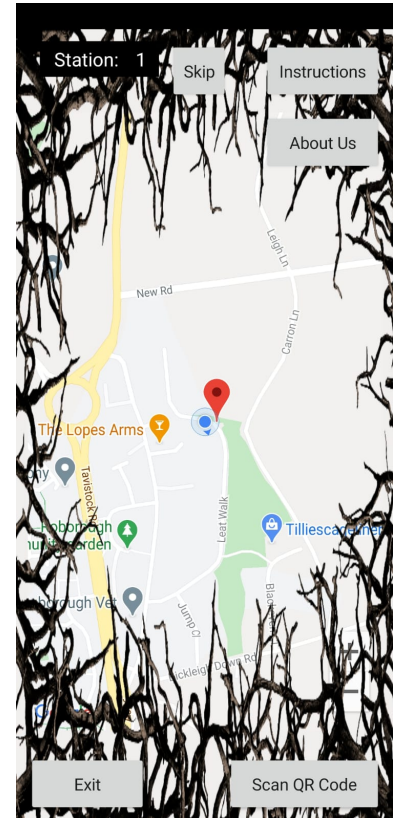
# Biblical Stations of the Cross – Holy Week 2021



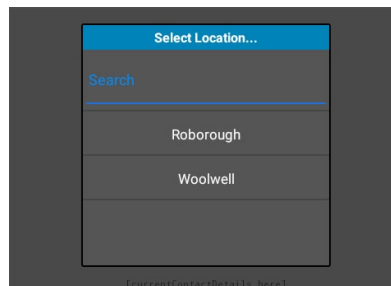
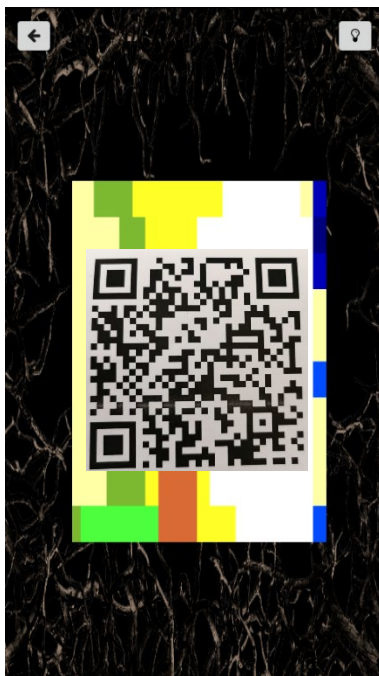
This is in the late stages of development and I plan to release it around Lent 5 (20/21<sup>st</sup> March) on Google Play. It will be a FREE App.

It invites people to take a walk around their local area guided by a Google Map.

At each identified location, the user can find and scan a QR Code (the square codes now so familiar to us from the Trace and Trace system) which loads and plays a video of a reading taken from the Scriptures on the Passion of the Lord.



A piece of suitable Holy Week music is then played and the user is guided to the next location.



I am willing to offer ANY Parish access to this App for use in their local area.

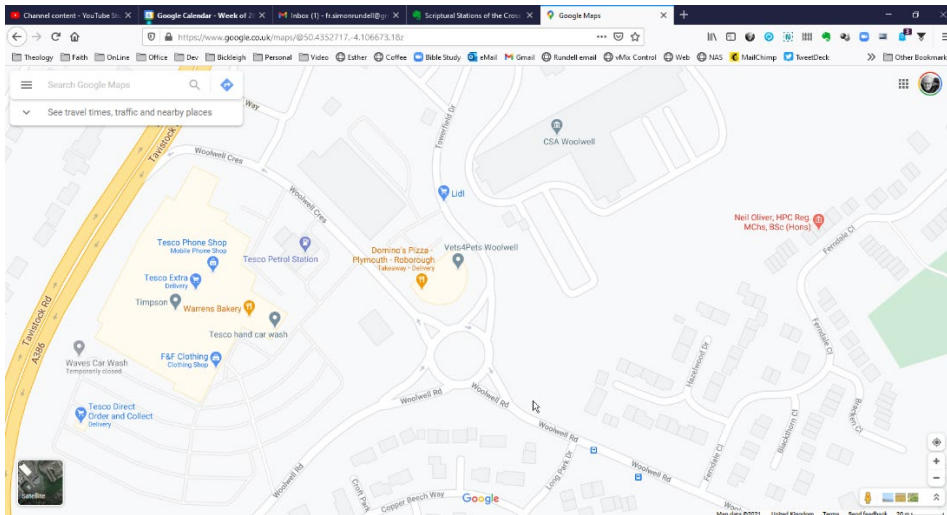
All you have to do is select the locations here you will place the laminated QR codes. The App will also display local contact information for your churches at the beginning and end of use, so you can use it as a form of outreach, mission and spiritual devotion combined with a small amount of exercise.

Instructions on how to determine the 15 locations are on the next page.

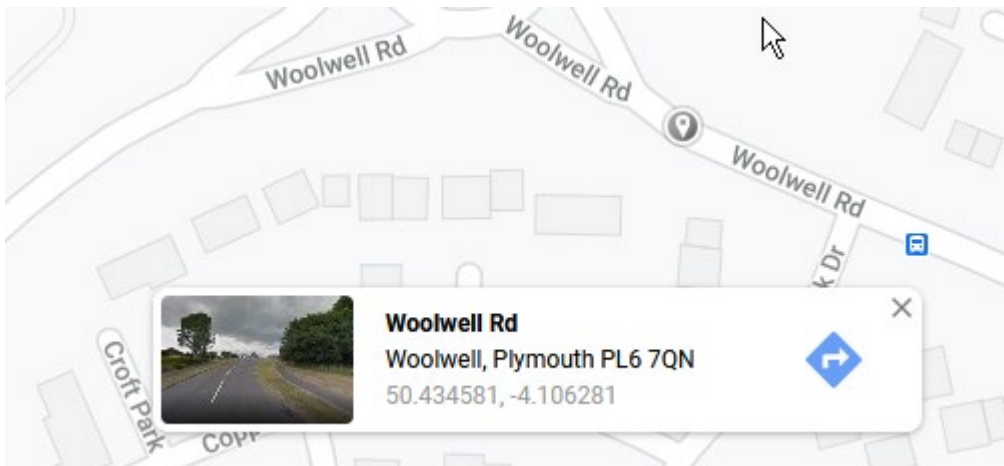
## Choosing your 15 Stations Locations

When you are emailed the QR codes you will need to laminate each one, unless they are going in windows, friendly shops or pubs, or noticeboards. The images are smaller than A4 so you can put them in an A4 laminating pouch and leave a gap around each edge because if you then holepunch a clear bit, water is less likely to leak inside. If you holepunch the A4 laminate then you can cable-tie the station to lampposts, road names and other bits of outdoor furniture.

To mark where you wish to put them, visit <https://maps.google.co.uk>



Identify the location you intend to put the Station and click on it.



A dialog box opens up at the bottom and where you clicked shows up as the grey icon above. There are two numbers shown in the box – these are the OS grid co-ordinates and these are the numbers you need to locate that Station. Write them down. Note that for most of us in the UK (west of Greenwich at least) the second number will be a negative number. Do this for all 15 locations enabling a little walk to be plotted around your locality.

Send me this collection of locations (the latitudes and longitudes) by email to: [fr.simon@rundell.org.uk](mailto:fr.simon@rundell.org.uk) along with any details you want to be shown – a Church or Parish

name, contact telephone, email and website. I will then send you the graphics of the barcodes for you to laminate and place in the locations you have identified.

I am creating this for use in my Parish and offer it freely to any other that wishes to use it. All I ask is that you pray for me (Fr. Simon) and the Parishes of Bickleigh and Shaugh Prior in our ministry and witness – call it *Prayerware* if you like.

When the App is released on Google Play then I will send you details of how people can find and download it for you to promote locally.

I hope you find it a useful addition to the things to offer this Holy Week when normal activities such as walks of witness are prohibited.

Yours in Christ

A handwritten signature in blue ink that reads "Fr. Simon". The signature is written in a cursive style and is underlined with a single blue stroke.

**Fr. Simon Rundell SCP**

Vicar, Parishes of Bickleigh & Shaugh Prior.