

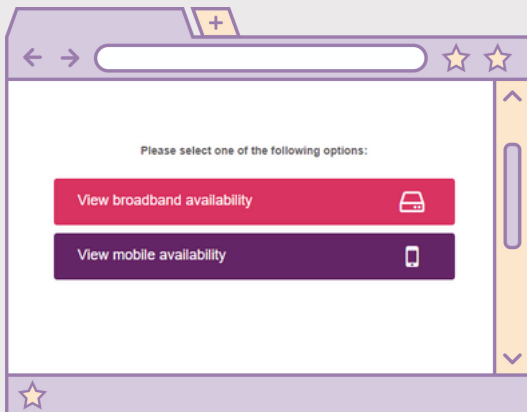
GETTING YOUR CHURCH BUILDING CONNECTED

You don't need to have a landline to have WIFI internet in your church building, you can use a WIFI Mobile Router instead. The big four mobile data networks (O2, Three, EE and Vodafone) account for 99% of all coverage in the UK. Below is a guide on how to check which provider offers the best service to your church, plus some ideas on the hardware you'll need.

CHECK COVERAGE checker.ofcom.org.uk

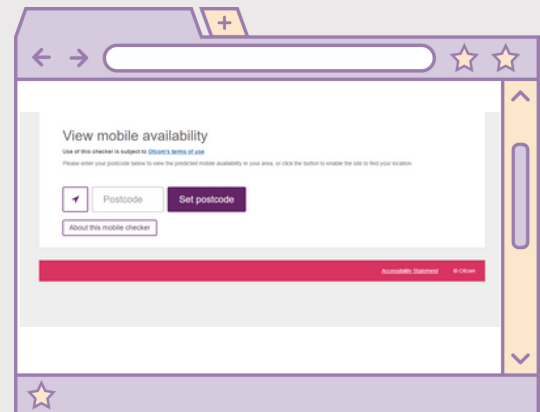
OFCOM is the UK's communications regulator and provides a free service for consumers to check which network provides the best coverage.

1



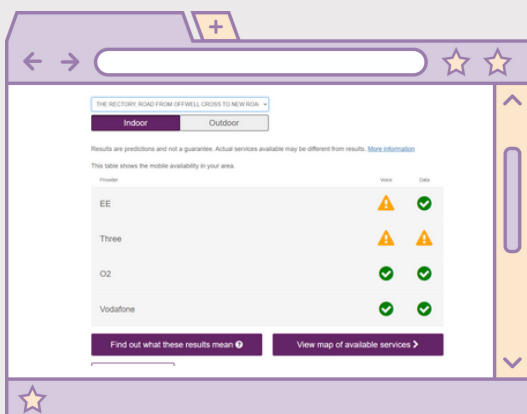
Go to the website checker.ofcom.org.uk and select view mobile availability.

2



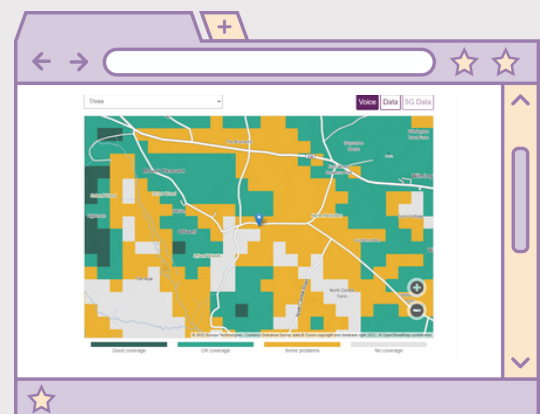
Type in the postcode for the church building if you have one, or the postcode for the building closest to the church.

3



The results will show which network has the best coverage. Click on the map link.

4



You can click on the map link to see how the coverage fares across different providers.

NEXT STEPS

parishbuying.org.uk

Being in a 'good' or 'ok' coverage area will be sufficient to run contactless giving devices, and will enable people with mobile phones to use QR codes to make donations from your church building.

With 'good' or 'ok' coverage you'll be able to set up a WIFI internet connection broadcasting throughout your church building. You will need two things. Firstly, a **mobile data connection** from a network provider, and secondly a **mobile data router** which will broadcast your new data connection around your church building.

DATA CONNECTION

1



Go to the website

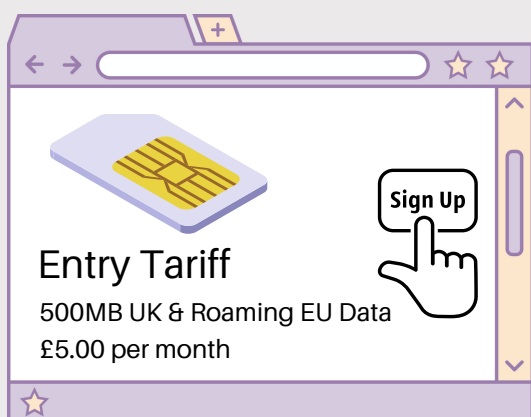
www.parishbuying.org.uk/categories/phone-and-broadband/daisy

2



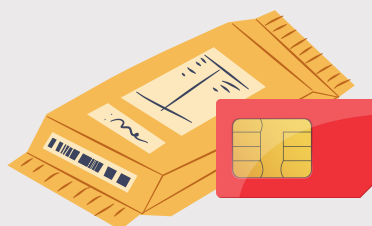
Daisy are an independent provider of communication services and work with the Church of England. They offer a service that uses all four major networks.

3



You don't have to go with 'Daisy' instead you can look for a provider that offers data-sim only services. Decide which tariff feels right for your church.

4



Once you've signed up and received your sim card you are ready for the next step. Purchase your mobile router, and place the sim card in the router.



Have a look at www.moneysavingexpert.com/cheap-mobile-finder/sim-only/

4G DATA ROUTERS

Simply put, a 4G router provides the exact same functionality as routers supplied by BT, Sky etc.

It acts as the primary incoming internet connection point for a single property and distributes that connectivity via both WiFi and ethernet for use by multiple devices within the premises. It's just that a 4G router receives its incoming broadband feed over the 4G network, rather than down a phone line.

Compared to mobile phones, 4G routers are far better at connecting to the 4G network, because their antennas are much more effective. And in locations where 4G coverage is weak, an external antenna can be fitted to any property and then connected up to a 4G router indoors to provide fast and reliable broadband.

A good quality 4G router shares incoming broadband via both WiFi and ethernet. In larger properties, it also allows its WiFi coverage to be extended via mesh extenders, if this proves necessary.

MIFI HOTSPOTS

A MiFi hotspot is a smaller wireless device that also uses the 4G network to provide broadband. Once online, a limited number of devices can connect to it over WiFi and share the broadband it provides.

MiFi hotspots are battery-powered so can be charged up for use on the go. However, because they are both smaller and lower power, they're not nearly as good at picking up 4G signals and the WiFi they put out will have a much smaller range.

Examples



D-Link DWR-921



TP Link Archer MR400

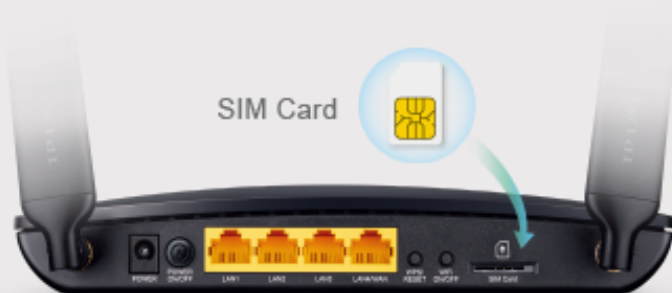
Examples



TP-Link M7350 4G

GETTING THE BEST SIGNAL

Once you have your sim card and your router you have everything you need to connect to the internet and broadcast the signal around your church building. Here are a few things to help maximise your signal strength and connection speed.



- Try out various positions and locations in the church.
- Try out a variety of sim cards, or use a daisy sim which will connect to the strongest network.
- Windows and Elevation are your friends.
- Using a signal booster can help, especially if your router has to be located behind a thick wall.
- Have you considered changing the router's channel? Plenty of free tools online will scan your local airwaves for the channels with the least interference. They will then suggest which channel you should switch to.

NOW YOU ARE CONNECTED...

parishbuying.org.uk

Through Parish Buying, there are two main routes for getting started with contactless giving. The 'do it yourself' route is to buy a SumUp card reader and pair this with Give A Little (an app built for receiving donations) on an Android phone or tablet. The other option is to buy a contactless donation device, which gives you everything you need to start receiving donations.



Mission Resources can be contacted by email - mission.resources@exeter.anglican.org