

HARTLAND COAST MISSION COMMUNITY

Benefice of Parkham, Alwington, Buckland Brewer, Hartland,
Welcombe, Clovelly, Woolsery, Bucks Mills and Lundy

Archdeaconry of Barnstaple: Hartland Deanery

Population	Area	Combined Electoral rolls
5,800	approximately 80 square miles (excluding Lundy)	220



Appointment of Pioneer Priest (0.5)

<https://www.hartlandcoastparishes.org>



CONTENTS

Pages 3 - 4	Archdeacon and Rural Church Officer
Page 5	Hartland Coast Mission Community's Unique Offer
Pages 6 - 7	Responsibilities and Person Specification
Page 8	Ministry and Support
Pages 8 - 9	Accommodation
Pages 10 - 18	Meet the Parishes
Page 18	The Area and Pattern of Services
Page 19	Facts and Figures, Websites and Useful Links

Archdeacon's Foreword

Are you looking for a mission focussed ministry in one of the most beautiful parts of coastal Devon?

Then, welcome to this amazing opportunity...



... and thank you for your interest in this post. It is a unique opportunity to serve the Hartland Coast Mission Community at an exciting time of reshaping ministry and building stronger links across the benefice. You will be joining a ministry team with a real desire to focus on mission and outreach, to live and bring the gospel of Jesus Christ to the wider community, to work together, to strengthen existing and growing new relationships.

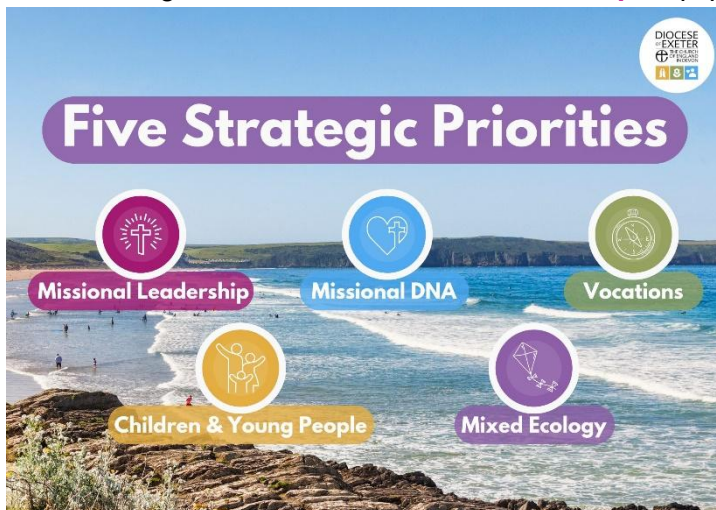
We are seeking a priest with a heart for mission. You will be working with a group of parishes seeking to grow in faith and discipleship and seeking to grow new disciples. We would hope that the right candidate will bring enthusiasm, energy and innovation to this role of Pioneer Priest (Team Vicar).

The successful candidate will get to know people in the Benefice and Mission Community and work with them to find new and exciting ways of making a difference in these communities. As the new Pioneer Priest (Team Vicar), you would enable people to grow in their discipleship, consider their gifts and explore commissioned roles. You would be someone who is open to exploring new and exciting possibilities in a rural and coastal context.

The **Rt Revd Dr Mike Harrison** was made **Bishop of Exeter** in November 2024, and since his arrival has been developing the Diocesan Vision. +Mike says: "the Diocese of Exeter's vision to grow in prayer, make new disciples and serve the people of Devon with joy has evolved over the last five years, with a widespread post-pandemic listening consultation leading to the development of the '[Next Steps](#)' strategy to support mission communities to flourish and be sustainable for generations to come. It's a vision that fits with Jesus' commission in Mt.28.16-20, which is authoritative for me and I'm sure for many.



Putting flesh on the bones of the vision, I would like to articulate five particular priorities for this next season of our life together. First, **Missional Leadership**: equipping and resourcing the ordained and lay leaders of our



Christian communities as best as we can to develop disciples and make new disciples. Second, developing a "**Missional DNA**" across our Christian communities, encouraging outward-looking, invitational churches, hospitable to outsiders and engaged with their wider communities. Third, cultivating an intentional **Vocational Culture** so that we are not asking whether God is calling me/us, but "To what is God calling me/us now?" Fourth, **Children & Young People** being placed at the heart of our life, mission and ministry. And fifth, a **Mixed Ecology**: understanding that we need different ways of doing and being Church. Alongside time-honoured Church we need all sorts of Christian communities which can engage with the 95% of our population who are as yet unengaged. I hope that these five priorities will become embedded at every level of our ministry going

forward."

Further information regarding our Diocesan Vision can be found at <https://exeter.anglican.org/who-we-are/vision-strategy/>



Living in Mission Communities

Our strategy centres on Mission Communities - parishes working together to share the Gospel of Jesus Christ more effectively in Devon. The phrase Mission Communities sums up what we need to be as a Church in the 21st century: **mission-orientated, community-focused, and locally-rooted.**

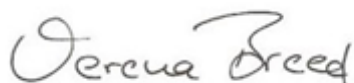
Deanery & Diocese

The Hartland Coast Benefice/ Mission Community (Parkham, Alwington, Buckland Brewer, Hartland, Welcombe, Clovelly, Woolsey, Bucks Mills and Lundy) lies in the Archdeaconry of Barnstaple, so is under the care of the Bishop of Crediton, the Rt Revd Moira Astin. The Revd Jane Skinner is the Team Rector. The Benefice is part the Hartland Deanery of which the Revd Jules Harris is Rural Dean. Jules is Team Rector of the Torridge Coastal Benefice.

We aim to be a diverse and truly representative diocese, and particularly welcome applications from women and those from black and minority ethnic groups. Not only is Devon a beautiful place to call home, but we believe the Diocese of Exeter is a great community of which to be a part.

You are warmly invited to contact me directly if you would like a confidential conversation about the post.

We look forward to welcoming you to the Diocese.



The Venerable Verena Breed, Archdeacon of Barnstaple

Rural Church Officer



North Devon is a very special place where God is at work. You will see from this profile that this is a new kind of post and a new way of doing things, but there will be support and encouragement if this is the post for you.

Our rural churches are often small, and often in communities with small populations, but those who work in rural church contexts will know that these churches have a big heart and are valued by their communities. They already reach beyond the church walls but these church communities are wanting to reach out even more with God's love and asking for your help to do that.

You will see many opportunities, and perhaps also interesting challenges in this post. Please do ask if you want to find out more, we welcome you to be curious. You will need to work closely with the leadership team to discern where your initial missional focus will be but, as your role develops and relationships grow, there will be a freedom that is sometimes rare in multi-parish ministry. Many people in the parishes, the leadership team, the deanery and beyond are here to support and encourage you and commit to enabling your wellbeing and flourishing in this beautiful place.

We'd love you to be part of the story here.

Revd. Preb. Rosie Austin

We have a unique offer to make!

After much prayer and consultation we are inviting a Pioneer Priest to join us in Northwest Devon. The Hartland Coast Mission Community is a group of nine parishes including the island of Lundy. We believe it's time to invite a Pioneer Priest to join us. We've prayed. We've taken time to prepare with Tina Hodgetts and Greg Bakker of CMS to better understand what it means to be a Pioneer Parish.

We are not asking you to have responsibilities for any of the parishes. We realise that running PCCs, building restoration projects and routine meetings does not float your boat but weighs you down. So, we will undertake the routine stuff leaving you free to be a "Good News" evangelist, pursue projects, build up teams, encourage faith sharing and enable new disciples to grow. Then move to opportunities you have discerned with new connections and developing relationships. In this way the Kingdom will grow, you will flourish and new Spirit-filled happenings will occur, bubbling up around us in ways we cannot yet imagine.

Are you a Pioneer Priest who longs to see the Kingdom of God breaking through and believe God is doing a new thing in Northwest Devon? At a recent rural conference with Arthur Rank Centre, Revd Simon Mattholie from Rural Ministries reminded us that national revivals have always started in the rural context. Help us follow where the Spirit is moving. We're praying for the right Pioneer Priest to join us in it. Could it be you?

Someone called to build fresh expressions of Church, form new communities of disciples, and walk alongside people who may never set foot in a Sunday service — but who are hungry for meaning, belonging and the love of Jesus.

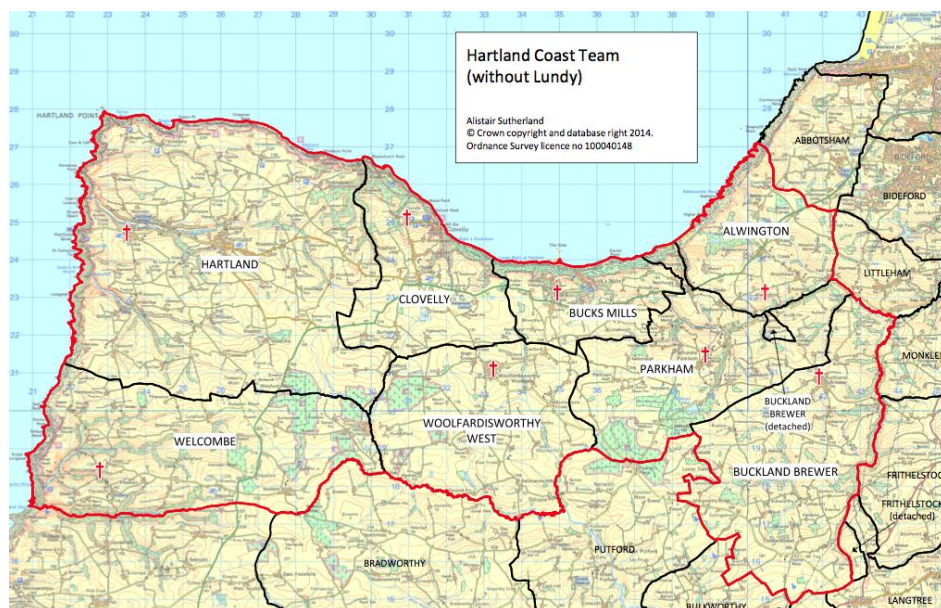
We'll pray for you, walk with you, and support you to:

- Dream bold Kingdom dreams
- Start Spirit-led initiatives
- Form mission-minded teams
- Encourage everyday faith
- Nurture disciples
- Follow the wild and beautiful leading of the Holy Spirit

We trust that as you go — God will go with you.

And in ways we cannot yet imagine, the life of Christ will rise up among us — new shoots of resurrection in our parishes, communities, countryside and coastlands.

So, if your heart leaps at the thought of pioneering for Jesus on the edge of the Atlantic - we'd love to hear from you.



Responsibilities

We need a Pioneer Priest who will be intentionally missional outside the church walls for most of the time. The post is Sunday plus 3 days. Identifying advocates to support your ministry of outreach is part of this appointment process. The Advocate Team will include people from both the Hartland Coast MC and wider members in the area and Diocese.

To spend around 70% of time with the community outside the church

Observe and engage with the local culture, understanding the values and priorities

Explore creative ways of engaging with the local culture and sub-cultures

Engage in the ministry of 'intentional hanging around' to build relationships informally

Initiate and develop relationships with people outside the church: particularly 'people of peace', community leaders, people 'on the edge' of community and social life

Share the gospel in culturally appropriate ways, in sensitive evangelism

Gather new believers and those exploring the Christian faith into groups and encourage the emergence of a new ecclesial community/communities

Create new missional teams and enable new pioneer vocations to emerge

Work collaboratively and ecumenically wherever possible with other church partners, notably our Methodist friends, engaged in similar activity

To spend around 30% of time in the local and wider church:

Included on the rota of services 1 Sunday a month and on the other Sundays where you are developing the more experimental services or making new connections intentionally within the Hartland Coast MC.

Meeting with the ministry team (usually fortnightly on Monday mornings) to establish understanding and support.

Communicate learning, ideas, and opportunities for strategic planning to inform and challenge our PCCs and Mission Community.

Attend Mission Enabling Group gatherings and be committed to on-going ministerial development. (Deanery, Diocese, national networks)

To help you get to know the area, we have identified a several exciting opportunities where you can grow community and build up teams, including members and new friends, until they are self-sustaining. Because of your unique gifting and skill set, you will discern new connections to be made with activities and people and nurture something new.

There is the exciting possibility of an extra day being paid for as a separate arrangement to work in Clovelly. This is ripe for pioneer work to build relationships with the residents and local people/groups who are connected with the village as few church members have the agility to manage the steep cobbled street.

We know from other Pioneers that asking you to run parishes probably drains your energy and we want you to flourish. Be flexible enough to lend a hand where we agree this is helpful all round but not expecting you to contribute to existing routine.

We recognize the need to manage both ours and your expectations in the early days of this new ministry.

Person Specification.

Area	
Qualifications:	<ul style="list-style-type: none">• Ordained Priest within the Church of England or in a Church in communion with it.• Graduated from a recognised pioneer training route or demonstrable development of pioneering vocation in a local context• Knowledge of pioneer approaches, missional ecclesiology, Fresh Expressions and/or church planting• Knowledge and experience of a diverse toolkit of leadership skills and approaches

	<ul style="list-style-type: none"> • Have connected and built relationships with people outside of church, adapting the Christian message for the rural culture and context. • Have built and led new worshipping communities or pioneering new initiatives.
Personal Characteristics:	<ul style="list-style-type: none"> • Ability to work as a missionary entrepreneur: imaginative, creative and flexible • Ability to build trusting, mutually reciprocal relationships with a wide range of people in a rural environment • An active and creative spiritual life that sustains ministry and connects to God's world • An ability to create, lead and inspire teams; a collaborative approach to ministry
Skills, Competencies and Abilities:	<ul style="list-style-type: none"> • Ability to grow community across variety of ages, educational and social backgrounds • Ability to share the gospel and communicate appropriately in different contexts • Ability to enable and disciple others • Ability to create personal support networks • The ability to reflect theologically on context and culture with others • Musical talent could open many opportunities.
Personal Qualities and Gifts:	<ul style="list-style-type: none"> • Having a well-grounded faith and sustaining rhythm of life • The gift of spiritual discernment • The gift of hospitality • Self-starter with the ability to work independently when required • Emotional intelligence, resilience and adaptability

On the Pioneer Spectrum we think someone will fit best who is an Adaptor, helping some of our services and projects to engage more effectively with those we seek to reach. Also, an Innovator who will leave us to get on with the traditional church practice and favour a relational journey with new contacts around us.

Hartland Coast Mission Community PCCs and Joint Council have met together for many months working with Pioneering Parishes resources to discern and share their key Values, Opportunities and Person Specification culminating in a gathering in August.



Animated exchange, sharing, prayer – a Mission Community investing in being Pioneer Parishes.

We can offer you:

- A supportive Diocese, connections with CMS and Rural Ministries and an Advocate Group.
- The freedom to discern the work of the missional spirit in the community
- The full support of the Ministry Team (currently 5 members), Administrator, Church Councils and our Methodist partners who are open to new ideas and courageous faith
- Freedom from traditional parish responsibilities and duties
- A huge variety of interesting activities already occurring in our villages
- Plenty of scope to build new connections with a wide variety of people for you to evangelise in ways suitable to the rural context and nurture discipleship
- A four bedroomed house in Parkham
- An inspiring natural environment with access to coast and countryside to constantly refresh

Ministry and Support



The team consists of Jane Skinner (Team Rector), Jane Hayes (Associate Priest) Andrew Macwilliam (Licensed Lay Minister) Vera Tooke (LLM) and most recently, Stephen Skinner (PtO).

Vocations are encouraged and currently Ann is training as an LLM and Frank is a candidate exploring ordained ministry. We are blessed with hard-working churchwardens and lay people who are growing in confidence and willing to lead occasional worship. Our PCCs are committed to the mission and ministry of the Church in this area and will offer strong support and encouragement to our new Pioneer Priest.

A Parish Administrator is currently paid for 40 hours' work a month by the majority of the parishes. The Parish Office is situated in the Church Rooms in the middle of Hartland.

As the Pioneer ministry is new amongst us, we want to listen and adapt for this to be a fruitful and life-giving arrangement. We have an 'Advocates Group' ready to support the Pioneer in this ministry of outreach. We expect to continue to receive support from CMS and Rural Ministries.



Jane Skinner (Rector) with Stephen Skinner (PtO) and Frank Watson (exploring ordained ministry).

Accommodation

The Team Rector and PtO live in the Rectory at Woolsery and the other three members of the team live in Hartland. The LLM in training also lives in Hartland.

At the east end of the Mission Community, the Vicarage is located in Parkham.

The accommodation is conveniently situated behind the church which is a 2 minute walk away along a footpath, and on a circular route around the village (5 Manor Court, EX39 5PG). There is plenty of parking and a large double garage, with manageable gardens to the front and rear.

The spacious accommodation provides an entrance porch, large hall cum dining room, a spacious lounge with a modern wood burner and patio doors opening out to the back garden. The large modern fitted kitchen, with room for a kitchen table, has a door leading to the garage, where there is plenty of room for white goods.

Upstairs there are 4 bedrooms: the master double bedroom with built-in wardrobes and ensuite, 2 single bedrooms and a very large bedroom over the double garage.

There is a family bathroom with WC.



The front garden has a lawned area with a flower border bounded by a low fence. The back garden is enclosed with lawn and flower borders and can be accessed by a side gate.

The property is heated by oil and has double glazing throughout.



Parish Profiles for Hartland Coast Mission Community

The Mission Community comprises nine parishes, diverse in nature but common in purpose. It was created in 2008 and the Parish of Lundy became the 9th member of the Team in December 2013. The Team Rector was licensed in November 2018 with the care of souls for all nine parishes of Parkham, Alwington, Buckland Brewer, Hartland, Welcombe, Clovelly, Woolsery, Bucks Mills and Lundy.

Representatives of each parish sit on the Hartland Coast Mission Community Council which meets to plan and pray for the mission of the team. As part of its role, it advances the Mission Action Plan which is based on the Diocesan strategy “Pray, Grow, Serve”.

All our churches seek to be at the heart of their communities. This proved to be especially important when we offered services and Coffee Mornings, with strategies in place to prevent the transmission of Covid, providing our communities the first steps to reconnect. A high proportion of our congregations are of retirement age, but we are constantly looking for ways to attract younger people. This is evidenced in Parkham with Sunday Church, in Woolsery with ‘Woolsery Arising’ and Family Events and in Clovelly with all age and innovative services.

Each parish has its own ecclesiastical tradition with some variety around the Team but Churchmanship is generally central. In addition to Sundays and some week-day services, some new groups are developing in a variety of ways. The pattern of services may be found as an appendix.

We believe that we must invest in reaching those on our fringe and beyond with the love of God and good news of Jesus Christ for people to come to faith and be the disciples of tomorrow. This is an act of faith. We believe God will enable a Pioneer to flourish and we will see new signs of the kingdom beyond and amongst us.

Here is a unique opportunity to lead, serve and build vibrant, Gospel-centred expressions of church. Come and join us in serving Christ and building His Kingdom in a place where you could flourish. We will continue to faithfully serve the church communities and make connections wherever we can with you. We need you to animate some of our projects and develop the teams that will sustain them. Then follow the promptings of the Spirit to reach new people and form new communities of faith. As Tina Hodgett says, “Follow the breadcrumbs!”

Our Values: Rooted in Christ, Reaching Out in Love

Community at the heart: *we believe the church is vital to the community in these rural villages. Our life together is rich in prayer, fellowship and joyful gatherings. Many arrive from more urban settings and are struck by the warmth of welcome – a welcome we see as a reflection of Jesus' unconditional acceptance.*

Christ – like Caring: *Jesus noticed people and responded, he didn't look away. We aim to do the same as we live out our faith. This means practical, down-to-earth care shown in strong, sacrificial love. Whether caring for the sick and elderly, supporting struggling families or attending as many events as possible, we believe love in action is the clearest form of witness. Don't forget the cake!*

Gospel-Shaped Mission: *meeting people at the school gate or in the pub, mission starts with being present, building trust and sharing hope. We want people to feel seen, heard and valued because they are treasured by God. This is practical evangelism, rooted in relationships and beholding aspects of Jesus.*

Stewardship with Vision: *Set in the heart of North Devon's striking landscape, we see creation not just as attractive scenery but as deeply cared for by God. We care for the land and try to live with environmental integrity – not as a trend but as a witness to God's creativity and care. There's opportunity here to lead, innovate and connect people with their Creator through His creation.*

Links with the Methodist Church

Congregations have sought out one another across the denominational divide and ecumenical worship is enjoyed in most parishes. We need to overcome some denominational barriers and run with opportunities.

There are joint congregations in five places: Parkham, Buckland Brewer, Hartland, Alwington and Woolsery which is an LEP with a covenant in its 26th year. Woolsery prides itself in being Woolsery Churches Together and plan events jointly. Elsewhere we welcome everyone, support each other and rarely recognise different denominations or labels.

The stage and depth of the relationships differ, but there is common purpose – to forge strong links and share worship and worship spaces – we are stronger together and evidence our unity as the Body of Christ.

St. Andrew's, Alwington

Next to the beautiful St Andrew's Church is the old parish school building, closed in 1956 it now provides a valuable social meeting space. It has a kitchen and toilet. It also houses our paperback fiction library. The former playground gives an area dedicated to encouraging wildlife complimenting a tidier area of churchyard with stunning views. The only other community building in Alwington Parish is the well-used Village Hall in Fairy Cross, near the A39.



Alwington's display at the HCMC gathering to work on Values & Opportunities together.

Current Events: Most church events are also community events and usually involve food.

- High Tea
- Bring and Share Harvest lunch,
- Community Lunch,
- Coffee mornings,

- BBQ following summer Songs of Praise,
- Songs of Praise now regular where a 'fifth Sunday'.
- Autumn Fair
- Coffee after church – those who don't attend the service also welcomed.
- Craft group
- Library
- The local residents working group help the churchyard team keep the area around the church and Old Schoolroom tidy.

Church Values:

Community at the Heart. We're here to be present, prayerful and practically involved in the lives of those around us.

Teamwork in mission. We are stronger together sharing many gifts.

Valuing and Caring for each other. Seeking to love one another as Christ loves us.

Pioneering Opportunity:

Creation Care and Church Grounds: Explore environmental projects that rejoice in creation and engage the wider community.

St. Anne's, Bucks Mills

The Parish of Bucks Mills was created and carved out of parts of the Civil and Ecclesiastical parishes of Woolsery and Parkham at the request of the landlord in 1862. It is not a civil parish. The parish is made up of two main hamlets, Bucks Cross where most of the population lives, and Bucks Mills, which has around 30 homes, most of which are second/holiday homes; there are outlying homes as well. The church is isolated between the two. The South West Coast Path passes through Bucks Mills.



Current project promoting interest in getting married locally.

Employment: Farming, Commuter, Retired, Hospitality.

Facilities:

Church: The church is open 24/7, bottled water and sealed biscuits are always available for visitors. There is no water on site and the only toilet is a portapotty! It has limited parking facilities that can be extended for weddings and funeral services. It has good acoustics.

Parish: Primary school children attend outside the parish mainly at the Village School group that includes Woolsery, Parkham and Buckland Brewer.

A Secondary Academy near Bucks Cross accepts students within the greater area. It is part of Athena Academy Trust. There is a village Hall at Bucks Cross where local people meet.

There is a Post Office/convenience store at the crossroads on the A39.

Key Events:

- The annual carol service is always well attended.
- The church has very strong links with the Braund Society who hold an annual service in the church.
- All the major festivals of the church year (Epiphany, Mothering Sunday, Easter and Harvest etc.) are celebrated.
- It is popular for small weddings.

Church Values:

Friendly and Hospitable

Dedicated, but small, PCC and congregation.

Pioneering Opportunity

Engagement with the Park Dean Static Caravan site and/or Atlantic Academy.

St Mary and St Benedict, Buckland Brewer

The Church is well placed at the top of the village with the adjoining old schoolroom, which now serves as a much-used community space – including a kitchen and toilet. The church roof and tower are in need of considerable repair, with a subcommittee seeking H.L.F. grants.

Not far from the church is the Methodist Chapel, with whom Services are shared.

A Community shop is nearby, in the converted chapel vestry.

There is a primary school in the village – federated with schools at Parkham and Woolsery.

There is a community pub and relatively new village hall, with many active organisations.



Hosting an Art Exhibition for plenty of local artists.

Current Key Events:

- Safari Lunch and Plant Sale,
- Village Fete,
- Garden Show,
- Weekly Coffee Mornings (held in the Methodist Church),
- Community and School Art Exhibitions (held in the church).
- School services (Harvest and Christmas) held also in the church.
- 'Open the Book' school-based ministry and regular Assemblies at the school.

Church Values:

Welcoming – outward looking; Unifying Christian presence with Methodists; Spirituality of Sacred Space; Involvement in Community Partnerships; Serving – school, village events etc.

Pioneering Opportunity

Room to Dream, Space to Grow: we're excited about what God is doing and there's plenty of opportunity for bold, creative mission in our community. Here's just a taste of what's possible:

Creative Exhibitions & Events

Build on our love of arts, crafts, and heritage—hosting vibrant events that celebrate local creativity and open doors to deeper conversations about faith.

All Saints, Clovelly

This historic parish contains All Saints and is located in Upper Clovelly.

There is a basic toilet near the churchyard.

In Lower Clovelly are several retail shops catering for tourists, and two popular pubs. Here is St Peter's Chapel – a simple building with a small servery – in a wonderful central position.

At the top of the visitor route into Clovelly is a large Visitor Centre that includes a café.

In Higher Clovelly is the Village Hall – a well-used facility with attached playing fields and stunning views out to Lundy Island and Bideford Bay.



Donkeys are an attraction several times a year at All Saints!



St. Peter's Chapel becoming a space appreciated by the community on The Street in Clovelly

Current special events directly involving Parish Church:

- Palm Sunday Procession (including donkeys)
- Sea Sunday Service
- Remembrance Sunday Service
- Christmas Lights switch-on
- Sea Sunday Service
- Christmas Eve Carol Service (also including donkeys)

Church Values:

Shaped by the Way of Jesus

Christ-Centred Service

We serve because Christ first served us. Whether in quiet acts of kindness or community-wide initiatives, we seek to be the hands and feet of Jesus—bringing hope, help, and healing wherever we can.

Joyful Hospitality

From sharing meals to opening our doors and hearts, we practice the radical welcome of Christ. We believe hospitality is holy—a way to show people they are seen, loved, and valued by God.

Kingdom-Minded Community.

We're here for the whole community, not just the congregation. Following Jesus means stepping out, building relationships and living out the Gospel in every corner of village life.

Pioneering Opportunity:

More use of St Peter's Chapel as a base for engagement with visitors and locals such as Coffee Mornings, Children's Groups, Exhibitions, Arts and Crafts Events, Hospitality to the many visitors

St. Nectan's, Hartland

St Nectan's Church is located outside Hartland Village in the hamlet of Stoke, not far from the Atlantic coast at Hartland Quay. The large, magnificent building attracts hundreds of visitors and houses a small kitchen under the tall tower.

Within Hartland itself are the 'Church Rooms' where the Mission Community Office is based. The lower floor houses a small hall which, with the advantage of a kitchen and toilets, is well used for Coffee Mornings, the weekly Holy Communion and Community Lunch and community meetings.

Hartland is easily the largest parish in the Mission Community, with a Primary School, Medical Centre, Fire Station, Camp Sites and 'The Resurgence Centre'. There are three pubs in Hartland village, a Parish Hall, British Legion Club, Post Office and shops, a Café and Fish & Chip Shop.

Hartland Abbey Estate is the biggest local landowner.



Hartland Carnival is a chance to catch up with the locals!

Current Church-related Events:

Stoke Church: position near Southwest Coastal path.

- Summer teas
- InfoPoint.
- Venue for Exhibitions, Concerts and musicians who delight in the acoustic

Church Rooms: in the village

- Regular Coffee Mornings
- Weekly Lunches
- Social events / meetings
- Choir practices
- Weekly ecumenical Communion
- Breakfast Church (monthly)

Outdoor Worship: at or above Hartland Quay

- Easter Sunrise and
- Sea Sunday with the town band.

Other

- Courses run in one of the three village pubs
- Bible study group
- Regular school assemblies and contact with school for other events

St John's Music and Arts Centre: in the village

- Established community of artists, venue for monthly Art & Craft Market, in conjunction with the Farmers' Market, which enhances networking and support of local artists and weekly rehearsal space for local band and chamber orchestra

Church Values:

- Service. Ready to be the hands and feet of Jesus.
- Joyful Hospitality
- From sharing meals to opening our doors and hearts, we practise the radical welcome of Christ. We believe hospitality is holy - a way to show people they are seen, loved, and valued by God.
- Community-minded

Pioneering Opportunity:

Development of Stoke Churchyard – churchyard trail, environmental care, outdoor worship/meditation space.

St. Helen's, Lundy

St Helen's Church, recently restored with a H.L.F. grant, is the spiritual heart of Lundy as well as now housing a sizeable exhibition and flexible community space. The vestry has been reconfigured to create a space for one or two people to stay, with its own kitchen, toilet & shower and upstairs bedroom.

The island has a very well used 'Tavern', shop, and airfield for helicopters and light aircraft.



The launch of the new Pilgrimage Trail from Lee Abbey to Lundy

Current Events

- The Church holds Services on the first Sunday of each month, when a Minister (as organised by the Team Rector) conducts Services. Mainly attended by visitors staying on the Island.
- The Church provides shelter in storms, a quiet space for reflection and prayer, information about the island, with some use for social events by resident population.
- An education and research base, e.g. for the Marine Festival.
- New destination for Lee Abbey to Lundy Way pilgrimage route.

Church Values:

Growing in Prayer and Discipleship.

Serving the thousands of visitors.

Pastoral support for longer term residents.

Environmental and conservation care.

Pioneering Opportunity:

Very limited opportunities, because most visitors only stay for a day or three.

A Pioneer Priest could find this a perfect place for much needed rest, reflection and renewal.

St. James, Parkham

St James' Church includes a community space with kitchen and a toilet by the vestry. The church building is in need of considerable repair, with a subcommittee seeking H.L.F. grants.

Within Parkham there is an active Methodist Chapel, with whom Services are regularly shared.

Parkham has recently had some new housing developments, scattered around the village.

There is a small Primary School (federated with Woolsery and Buckland Brewer).

There are three pubs in the parish, but just one lies within the main village (others on A39).

Current Events:

- Church / Chapel: Monthly Sunday Breakfast
- Rogation Walk and Service, 'Barn' Services (notable Nativity Play).
- Monthly 'Table Talk' discussions in Pub.
- Monthly Coffee Morning.
- Social Events by Church: Barn Dance, Burns Night Ceilidh, Strawberry Tea.
- Monthly Repair Café in Church recently launched with interested locals, outreach and relationship building opportunities.
- Good relationship with Primary School – events/assemblies/Open the Book
- School Harvest & Christingle services held in Church.



Church Values:

Reflect Jesus' welcome through open-hearted, Christ-like hospitality

Celebrate the image of God in all people, creating spaces of belonging where lives are valued and stories are heard

Build strong communities that live out faith in everyday life

Proclaim the good news of Jesus with love, clarity, and courage—so that others may come to know Him and grow as His disciples

Pioneering Opportunity:

Engagement with the wider communities of the parish – new residents moving in

St. Nectan's, Welcombe

St Nectan's is located in one of the various small hamlets that comprise this well spaced out village bordering Cornwall and the Atlantic. Surrounded by an ancient meadow as well as the churchyard.

It has a small kitchen and toilet and a community space near and under the belltower.

The parish has two pubs, a pottery and an excellent village hall.



Popular dog show at Welcombe Church Fete, a great community annual event

Current Events:

- There is a small but growing Sunday School.
- Fortnightly Village Lunch in the Village Hall, run by church and community members.
- Christmas Services include a 'Walking Nativity'.
- Easter Egg Hunt (combined with Easter Garden making). Harvest Festival.
- Summer Fete and Dog Show, run by the church on its Church Field, along with other Welcombe organisations.
- "Wild Welcombe" environmental events/services; programme is developing.

Church Values:

Welcoming all with open hearts and offering a safe community.

Celebrating the diversity of God's creation and caring for the environment.

Open doors, living out hospitality, hope, and service in the heart of the countryside.

Pioneering Opportunity

Continue to develop 'Wild Welcombe' and explore links with local musicians, craftspeople, people with 'alternative spiritualities' and environmentalists for mutual learning and possible joint events.

All Hallows, Woolsery

Proud to be a Local Ecumenical Partnership that was created 26 years ago and steps in unity continue to develop. All Hallows Church has a small servery area, but no toilet (we use the Methodist's!)

Several pews removed to provide substantial community space.

All Sunday Services, events and funds raised are shared between church and chapel on an equal basis.

There is a largish Primary School (federated with Parkham and Buckland Brewer), a large Village Hall, shop, and local pub with 'fine dining' Restaurant.



Making 'Bug Hotels' at Family Summer Event with Vera.

Current Events:

- Annual "Show" (based at Clovelly)
- Weekly Coffee Morning,
- Fortnightly Village Lunch,
- Monthly Book Sales,
- Quarterly Farmers Breakfasts,
- School Art Exhibitions, regular Assemblies in local school, seasonal school Services in Church
- Christmas Tree Festival.
- "The Gathering" – informal monthly Service / Social led by retired Minister.
- "Woolsery Arising" innovative all age worship (monthly).

Church Values:

Community Engagement: Building the Kingdom by being a loving presence at the heart of our community.

Working Together: United as the Body of Christ, serving and growing in faith side by side.

Involvement: Active hands and open hearts, joining God's mission in every part of life.

Spirituality: Rooted in prayer and journeying with God.

Environment: Honouring God's creation by caring for the earth.

Pioneering Opportunity:

Nurture the established links with the farming community of all ages (Farmers Breakfasts and there is a Young Farmers Club).

The area

Situated in the beautiful North Devon countryside, the Hartland Coast Mission Community is the only one in Exeter Diocese to be on the Bristol Channel and the Atlantic.

The area is renowned for its coastal walks, clean beaches, surfing spots and cream teas! Much of the area is designated AONB and Lundy (yes, we boast an island!) is designated as a Special Area of Conservation (SAC), a Site of Special Scientific Interest (SSSI), a Marine Conservation Zone (MCZ) and Bird Observatory. The coastline is rugged with spectacular cliffs and the region often attracts film-makers, as it incorporates Hartland Abbey, Lundy and the picturesque Clovelly and Bucks Mills.

There are Primary Schools in four of the parishes (none of which is a Church School), secondary schools are Atlantic Academy at Bucks Cross also Bideford, Holsworthy and Bude with a number of private schools in the area. The District Hospital is situated in Barnstaple and there is a Community Hospital in Bideford.

The nearest rail links are at Barnstaple (27 miles from Hartland) and Tiverton Parkway (58 miles from Hartland) which is a mainline connection. Trains run regularly from Barnstaple to the city of Exeter (60 miles from Hartland) on the outskirts of which is the nearest airport. There is also an airport at Newquay and Bristol (120 miles away). National Express coaches run from Bideford, the nearest market town (15 miles from Hartland). There are infrequent, but regular, bus services to and from Bideford and also Bude. Travel to and from Lundy Island involves a boat or helicopter trip.

There are Art Galleries in the area and opportunities to become involved in music making, singing and amateur dramatics. Theatre-goers may travel to Torrington or Barnstaple and film buffs to Bideford or Bude or enjoy the local film-clubs.

The ministry team is currently able to support the services displayed in this typical rota.

SEPTEMBER 2025

Sep-25	Alwington	B. Brewer	Parkham	Woolsery	Bucks Mills	Clovelly	Hartland	Welcombe	Lundy
7th	Baptism 2pm	11am HC	11am Bideford	9.30am MW	11am MW	at Bucks	11am MW		31/8
Trinity 12	JH	JH		JH	VT		AM		CBo
14th	11am Harvest	10am MW	10am SB (J)	9.30am HC	at Clovelly	11am HC	11am HC	9.30am HC	
Trinity 13	VT	MM		JS		JS	MB	SJS	
21st	11am MP	10am	3pm Harvest	9.30am	11am HC	at Bucks	10am B'fast		
Trinity 14	AM	JS	MM	MM	SJS		AA / EP		
28th	9.30am HC	10am Harvest	11am HC	9.30am	at Clovelly	11am Harvest	11am Harvest	9.30am MW	
Trinity 15	JS	MM	JS	MM		SJS	JH / AM	VT	
<div> <div>Holy Communion/Family Communion</div> <div>Morning Worship (CW)</div> <div>Morning Prayer BCP</div> <div>All age worship / Breakfast / Songs of Praise / WA = Woolsery Arising</div> </div> <div> <div>Service in Chapel. S'ment = Sacrament</div> <div>Baptism</div> </div>									

Mid-week services:

Mon – Friday Morning Prayer is said in church at Woolsery 9am

Mon/Tues/Thurs/Fri Morning Prayer is said in the Church Rooms Hartland 8.30am

Wednesdays - Holy Communion is celebrated in the Church Rooms Hartland at 11am

Facts and figures.

The following statistics have been taken from the annual returns for 2024.

2024	Electoral roll	Usual Sunday attendance	Confirmations	Baptisms	Weddings	Funerals church	Funerals crem
Hartland	43	23	0	2	4	8	3
Welcombe	11	7	0	1	1	3	0
Bucks Mills	8	6	0	1	1	1	0
Clovelly	8	8	0	1	1	2	0
Lundy	21	Once monthly 5 av.	0	0	0	0	0
Parkham	22	12	0	2	0	2	2
Woolsery	30	18	0	2	1	4	2
Alwington	20	18	0	0	0	5	0
Buckland Brewer	29	13	0	1	0	3	1

Parish Websites and other useful links.

<https://www.hartlandcoastparishes.org>

www.alwingtonparish.org

www.bucklandbrewerparish.org.uk/local-services/worship

www.clovelly.co.uk/village/places-of-worship

<https://sthelenslundy.co.uk>

<http://www.parkhamparish.org.uk/>

www.welcombe.net

www.hartlandpeninsula.co.uk

www.hartland.devon.sch.uk

<https://www.villageschools.org.uk/>

www.atlanticacademy.uk

www.exeter.anglican.org



St. Nectan Hartland (aka The Cathedral of North Devon) with Lundy visible on the horizon.