

Team Vicar

for the Crediton Ministry Team
serving the Crediton and Upper Creedy Valley Parishes



Presented Date:



Archdeacon's forward

Welcome and thank you for your interest in this post.

This post presents a great opportunity to minister in the newly formed Crediton Ministry Team during an exciting time of reshaping ministry and building stronger links across the wider area. You will be joining a ministry team with a real desire to work as a team building on good relationships.

We are seeking a priest with a heart for pastoral care and a desire to further mission and ministry. You will be working with a group of parishes seeking to grow in faith and discipleship. We would hope that the right candidate will bring enthusiasm, energy and innovation to this role of Team Vicar (designate) and invest in the wider team.

The Rt Revd Dr Mike Harrison was made Bishop of Exeter in November 2024 and since his arrival has been developing the Diocesan Vision. +Mike says:



*“The Diocese of Exeter’s vision to grow in prayer, make new disciples and serve the people of Devon with joy has evolved over the last five years, with a widespread post-pandemic listening consultation leading to the development of the **‘Next Steps’** strategy to support mission communities to flourish and be sustainable for generations to come.*

It’s a vision that fits with Jesus’ commission in Mt.28.1- 20, which is authoritative for me and I’m sure for many. Putting flesh on the bones of the vision, I would like to articulate five particular priorities for this next season of our life together.

*First, **Missional Leadership**: equipping and resourcing the ordained and lay leaders of our Christian communities as best as we can to develop disciples and make new disciples.*



The Venerable Andrew Beane
Archdeacon of Exeter

@ ade@exeter.anglican.org

☎ 07898 932654

☎ 01392 425577

Bishop Mike’s message for
Pray, Grow, Serve 2035



Living in Mission Communities

Our strategy centres on Mission Communities - parishes working together to share the Gospel of Jesus Christ more effectively in Devon. The phrase Mission Communities sums up what we need to be as a Church in the 21st century: mission-orientated, community-focused, and locally-rooted.

Deanery & Diocese

The Crediton Ministry Team includes over 20 parishes centred around the Market Town of Crediton and lies in the Archdeaconry of Exeter, and so under the care of the Bishop of Crediton. The Revd Preb. Matthew Tregenza is the Team Rector. The Benefice is part of Cadbury Deanery of which Matthew is also the Rural Dean.

We aim to be a diverse and truly representative diocese, and particularly welcome applications from women and those from black and minority ethnic groups. Not only is Devon a beautiful place to call home, but we believe the Diocese of Exeter is a great community of which to be a part.

Further information regarding our Diocesan Vision can be found at [Diocesan Vision and Strategy](#).

PRAYGROWSERVE
Inspiring Faith in Devon 2035



Second, developing a “**Missional DNA**” across our Christian communities, encouraging outward-looking, invitational churches, hospitable to outsiders and engaged with their wider communities.

Third, cultivating an intentional **Vocational Culture** so that we are not asking whether God is calling me/us, but “To what is God calling me/us now?”

Fourth, **Children & Young People** being placed at the heart of our life, mission and ministry.

And fifth, a **Mixed Ecology**: understanding that we need different ways of doing and being Church. Alongside time-honoured Church we need all sorts of Christian communities which can engage with the 95% of our population who are as yet unengaged. I hope that these five priorities will become embedded at every level of our ministry going forward.”





Welcome

We are delighted that you are exploring this profile. We are currently seeking a passionate and visionary new Assistant Priest to join us as a Team Vicar. This is a uniquely exciting season for our churches as we step into a new chapter as CREDITON Ministry Team serving the CREDITON and UPPER CREEDY VALLEY parishes. Together, we are developing a creative, collaborative approach to rural ministry within a growing team, serving a large and beautiful area centred on the historic market town of CREDITON.

In this role, you will join our Team Rector, two Team Vicars, and our growing team of ordained and licensed clergy. We hope your task will be to help us pioneer and nurture our new 'Dispersed Minster Model', and 'Focal Ministry' approach to mission.

We are earnestly praying for an experienced leader who is deeply committed to collaborative ministry. We are looking for a leader who would genuinely enjoy shaping a fresh, hopeful model of mission for the rural church, and who is dedicated to enabling and empowering the remarkable gifts and skills of our lay people.

If you have a heart for rural communities and a spirit of innovation, we warmly invite you to join us on this exciting journey as we grow in prayer, make new disciples, and serve our parishes with joy.



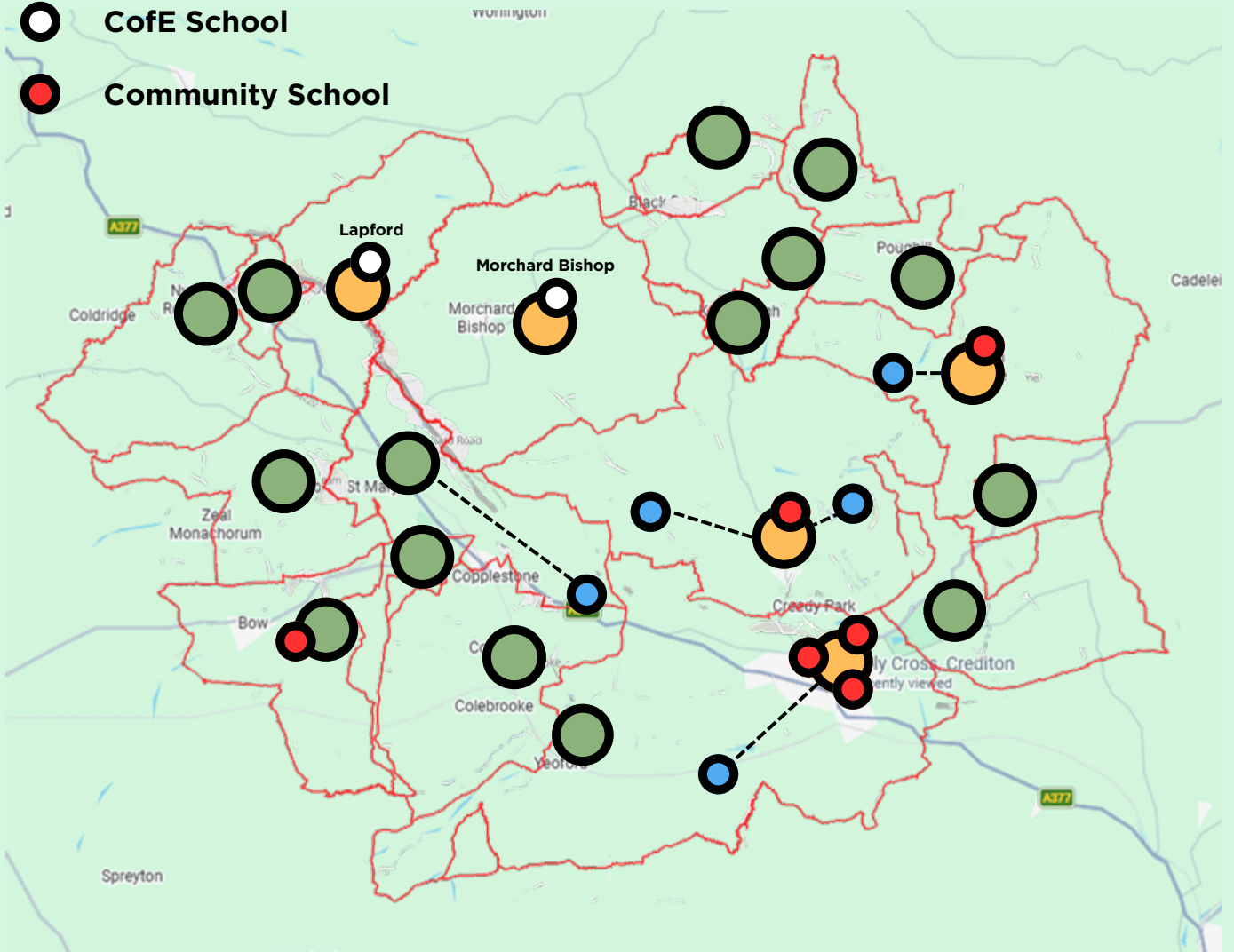
Revd Prebendary Matthew Tregenza
(Team Rector and Rural Dean)

Rooted and Connected

“We are moving toward a Focal Ministry model of leadership that sets every community and what God is doing there, right at the heart of our shared ministry”

- Minster and Dispersed Minsters
- Parish Churches

- Chapel of Ease
- CofE School
- Community School



Shared and Collaborative



Revd Preb Matthew Tregenza

Matthew Tregenza was ordained priest in Salisbury Cathedral in June 2004, following a career in teaching. He served a curacy in a group of parishes in Dorset, and then served in parishes in South Wales. Prior to coming to Crediton, he was Rector of a group of rural parishes in Somerset, where he was also a Rural Dean.



Revd
Janet May
Team Vicar



Revd
Jeremy Putnam
Team Missioner



Revd
Sandra Collier
Distinctive Deacon
& Focal Minister

Team Vicar
Vacancy

Full Time
Stipendiary
Curate

Starts
July 2026



Laura
Armstrong
Licensed Lay
Minister
& Ordinand



Carol Price
Licensed Lay
Minister &
Focal Minister



Antonia
Tregenza
Licensed Lay
Minister &
Ordinand



Ian Stobart
Licensed Lay
Minister &
Focal Minister

Gill Lee

Parish
Administrator
15hrs
per week

Vacancy
(NEW)

Parish
Administrator
15hrs
per week

Our Vision

Our Vision is to be a place where people can discover God; through prayer, through discipleship and through serving the people of our communities.

And it is our hope that everyone who lives and works in our parishes might receive the Good News of Jesus Christ through either a faithful word, a compassionate friend, or an act of kindness.

To make this a reality, we are exploring an innovative 'Dispersed Minster Model' to pioneer sustainable growth across our rural communities. Giving space for a collaborative focal ministry that emphasises our priority for a visible, present, rooted and approachable ministry in every parish. We aim to grow bolder, humbler, simpler, and younger by focusing on two core principles:

- **Celebrating Uniqueness:** We are committed to affirming the distinct identity of each parish. Rather than centralising into a large, faceless benefice, our Team Vicars, Deacons, Licensed Ministers, Focal ministers, and future Commissioned Leaders will remain deeply rooted in the individual villages they serve so that people can continue to relate to their own local church.
- **Finding Strength in Unity:** While maintaining local independence, we will collaborate where it makes sense to share resources and benefit from economies of scale. We will come together as a broader team to coordinate central administration, schools work, lay development, and social action.



What we offer

Incredible Variety

From civic occasions to intimate Holy Communion services, and from choral evensong to digital worship, our new Mission Community offers a rich variety of worship styles. You will minister across diverse settings, ranging from historic medieval buildings to church halls, and from deeply rural communities to the bustling market town of Crediton.

A hand holding a lit candle with a wooden cross on top, set against a blurred background of a church service. The candle is lit, and the cross is made of wood. The background shows a person in a red and white striped garment, possibly a priest or altar server, and other people in a church setting.

What we offer

Opportunity

You will have the chance to help drive forward a new take on multi-parish ministry that embraces Fresh Expressions while continuing to affirm the traditional church. We offer engaging work alongside both lay and ordained colleagues to develop discipleship across the team, as well as outreach opportunities with schools, nursing and residential homes, community organisations, and the local farming community.

We are praying

...the Holy Spirit to lead the right person to us.

This is an incredibly exciting time for us as we explore a new model of shared ministry across our rural communities. We are looking for a gifted priest who will journey through the transitions ahead, both supporting and challenging us to embrace all the potential the future holds.

Working closely with the Ministry Team, we long for a collaborative leader who will join us in:

Deepening our spiritual life

Be a prayerful practitioner rooted in your own spirituality. We seek someone who will embrace our different traditions with creativity and innovation, enabling people of all ages to grow in faith and deepen their discipleship.

Pioneering our vision

Work alongside the Ministry Team to develop the dispersed minster model of church, guiding our church communities as we engage with structural change.

Connecting our communities

Seek to be a visible presence in community life, building strong relationships across the area, whilst developing a focal presence in the two largest villages of Morchard Bishop and Lapford.

Embracing rural ministry

Ideally, you will bring experience of multi-parish benefices and rural settings. You must love the rural church—and be able to confidently drive (and reverse!) through the narrow, muddy lanes of Mid Devon!

for...



Modeling a healthy work-life balance

Value working alongside a community that actively wants to support your personal wellbeing.

Bringing a joyful spirit

Be an enthusiastic, creative, and clear communicator who is flexible, approachable, empathetic, and possesses a joyous disposition.

Nurturing school links

We would love for you to lead in nurturing existing relationships with our two Church of England primary schools in Morchard Bishop and Lapford. We hope you will help us continue to integrate the living faith of the churches with that of the schools. This is key priority area for this new ministry.

A group of seven people, including a bishop and several clergy members, are standing in a church interior. They are wearing various clerical robes, including a mitre and a crozier. The background shows stone walls and arches.

What we offer

Deep Collegiality & Support

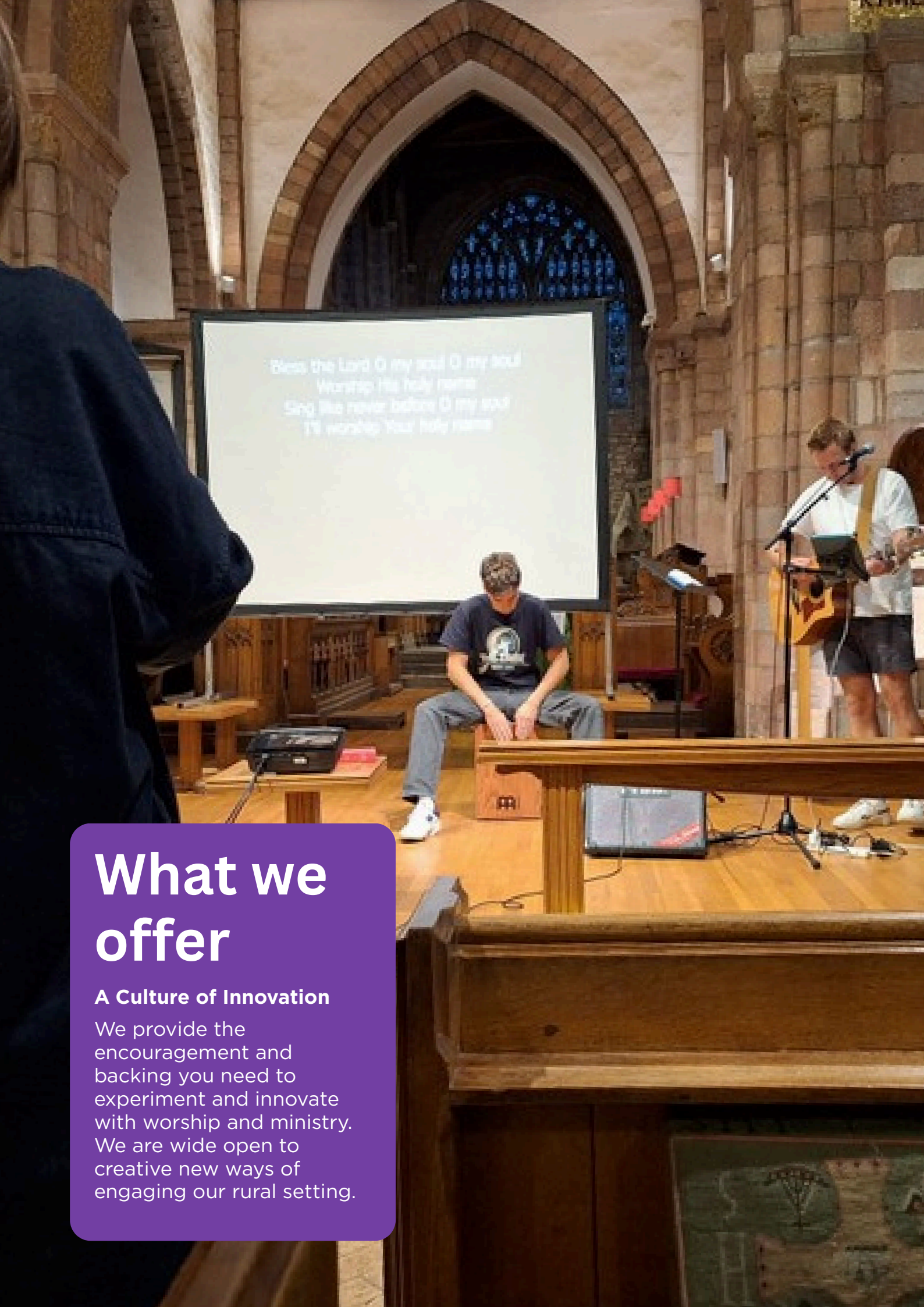
Experience genuine ministerial support rather than rural isolation. While rooted in your local parishes, you will benefit from regular prayer, fellowship, centralised administrative help, and the backing of excellent colleagues.



What we offer

A Focus on Discipleship

We are deeply committed to making new disciples and walking alongside people as their faith deepens. You will be joining a collaborative team that is intentionally focused on supporting everyone—in the pews and in the wider community—in their own unique discipleship journey.



Bless the Lord O my soul O my soul
Worship His holy name
Sing like never before O my soul
Till worship Your holy name

What we offer

A Culture of Innovation

We provide the encouragement and backing you need to experiment and innovate with worship and ministry. We are wide open to creative new ways of engaging our rural setting.



What we offer

Growing Faith

We offer the exciting opportunity to champion the Church of England's "Growing Faith" strategy, beautifully connecting home, school, and church. You will be warmly welcomed to build upon the strong, active relationships we already enjoy with our two excellent Church of England primary schools in Morchard Bishop and Lapford

The Parishes

Dispersed Minsters (your focal ministry)

You'll be licensed to the whole benefice but we're hoping you can take up a visible and approachable focal ministry in the parishes of these two dispersed minsters

Lapford

| | |
|------------------------------|--------|
| Population (2021 census) | 1150 |
| Participation figures (2025) | 15 |
| Common Fund (2026) | £7,701 |
| Contribution (2025) | £6,658 |

St Thomas's is a beautiful Grade One Listed church with an exceptional interior, renowned for its fine 15th-century rood screen and historic links to Thomas à Becket. A 2025 extension added new facilities to help us host wider community events. Our varied worship pattern includes a monthly Eucharist and regular Lay-Led Morning Prayer. We actively share services with "Churches Together in Lapford" and host major village gatherings like the annual Revel and Remembrance Sunday services. Excitingly, as of January 2026, our village school became St Thomas of Canterbury CE Primary School, enabling a closer and more meaningful connection between our church's spiritual and social ethos with the school community.



Morchard Bishop

| | |
|------------------------------|---------|
| Population (2021 census) | 1046 |
| Participation figures (2025) | 21.46 |
| Common Fund (2026) | £13,663 |
| Contribution (2025) | £11,523 |

Morchard Bishop is a thriving Mid Devon village of around 1,000 residents, situated halfway between Dartmoor and Exmoor on the Two Moors Way. Our vibrant community boasts excellent amenities, including a shop, pub, and surgery, alongside a Good-rated C of E primary school right opposite our Grade 1 listed 13th-century church, St Mary's.

We share a positive and relationship with the school, hosting regular mid-week all-age worship and performances. Our weekly Sunday services alternate between lay-led worship, Eucharist, and a popular Family service. With active bellringers and highly supported community events like our Summer Fayre, St Mary's remains a welcoming focal point for village life.



Our Parish Churches

There are so many wonderful things happening in these parish churches. Whilst providing pastoral oversight and leadership, we hope to encourage vocations over the coming years from across the benefice so that these parishes all benefit from focal ministry from ordained, licensed, or commissioned leaders.



Bow

Our Grade I listed church, St Bartholomew's, is a beautiful 13th-century building situated just outside the thriving village of Bow. Bow is a well-resourced community of around 1,250 people, complete with a primary school, medical practice, and local shops. The church, seating 120, holds a monthly Eucharist alongside lay-led services, supported by a small choir and a highly successful, active team of bell ringers. We have a dedicated fundraising group and offer warm hospitality after services. We would especially welcome a priest keen to help us engage and draw younger families into our friendly church family.



Coldridge

Set on a hilltop with spectacular views, St Matthew's is a beautiful medieval church at the heart of our socially active, 400-strong parish. Our historic building features rare 1511 stained glass of international importance, drawing visitors from around the world. We are supported by an enthusiastic, forward-looking PCC and dedicated working groups who are driving major fundraising for structural and environmental improvements. Alongside regular Holy Communion and Lay-Led Morning Prayer, we host lively family services and successful community events like 'Jazz In The Nave'. Any new priest can be assured of a very warm welcome.



Colebrooke

Colebrooke is a rural parish of around 460 inhabitants, situated four miles west of Crediton. Our historic Grade I listed St. Andrew's is the largest church in the Mission Community, seating up to 200 people. We are blessed with a small but growing congregation, supported by an enthusiastic volunteer group and a "Friends" network reaching over 70 locals. We have a proud history of music, with recent events like our Carol Service drawing 180 attendees. Our worship includes a monthly Holy Communion and lay-led Morning Prayer, and our refreshed PCC has exciting plans to further integrate the church into community life.



Our Parish Churches

Focal ministry is already starting to flourish in our churches across the benefice. Shobrooke, Yeoford, and Colebrooke are examples of places that have seen a 'one leader one community' approach. All our parishes have a dedicated local lay team of volunteers who are passionate and committed to their local church and village.

Clannaborough

Clannaborough is a unique, small parish with no central village, situated five and a half miles northwest of Crediton. Our Grade II* listed church, dedicated to the Celtic saint Petrock, commands tremendous views towards the northern ramparts of Dartmoor. Located just off the historic Two Moors Way, the church is always open and attracts visitors and walkers all year round. The well-maintained building seats about 45 people and features a carillon of eight bells. We currently gather once a month for a quiet, reflective service using the Book of Common Prayer.



Zeal Monachorum

St Peter's stands at the spiritual heart of Zeal Monachorum, serving a parish of about 400 residents made up of both retirees and younger working families. We hold three services each month, including an evening Common Worship Eucharist, a lay-led Family service, and a lay-led sung evensong, all supported by a congregation that deeply values our church's warmth. Because we live in a beautiful retirement area, we often host more funerals than other family occasions. Our active community frequently gathers for social events in the village hall, and our vision is to be a welcoming beacon of Christian love.



Nymet Rowland

Nymet Rowland is a small, deeply rural village located nine miles northwest of Crediton, offering stunning views across the moor to Belstone and Yes Tor. With a parish population of about 100 people, we are a tight-knit community with a beautiful Grade I listed church. Originally a small Norman chapel, the building still features original south-side stonework and a Norman font that remains in use today. Our worship tradition is faithfully rooted in the Book of Common Prayer, providing a quiet, historic sanctuary for prayer and reflection.



Down St Mary

Set in a beautiful rural landscape just off the A377, the ecclesiastical parish of Down St. Mary encompasses our small village alongside the hamlet of Morchard Road and the larger village of Coplestone. While our congregation is small and advancing in years, they are deeply spiritual, devout, and dedicated to maintaining a witnessing presence in the village. We are incredibly pleased to maintain a rhythm of four regular services each month. The wider community generously supports our church by helping to maintain the churchyard and creating beautiful floral displays.



Knowle

Knowle is a tiny hamlet set in rolling countryside just off the A377. We are a small, close-knit farming community that warmly welcomes newcomers. There are strong connections between the church and village, with mutual support readily available, as well as good social links with the nearby village of Coplestone. Our church building has a unique history; originally the village school, it was consecrated for worship in 1953 following the addition of a chancel. The building and surrounding area are kept in excellent order, and we are fortunate to have a car park and toilet facilities. The church remains open every day for visitors and private prayer.



These parishes offer an exceptional opportunity for a priest who is passionate about the future of the rural church, and willing to share leadership with our current and emerging lay and ordained leaders. Set in the breath-taking and well-connected landscape of Mid Devon, this role invites you to be at the forefront of pioneering a new approach to rural ministry.

A prospective Team Vicar will be drawn to the incredible variety found here—from historic, Grade-I listed buildings offering traditional BCP services to vibrant family worship. You will also inherit strong, active links with the local farming community and two excellent Church of England primary schools, and a community school in Bow.

Most importantly, you will not be ministering in rural isolation. You will be joining a highly collaborative, supportive ministry team and deeply committed lay congregations who are enthusiastic, open to innovation, and ready to grow the church.

The Vicarage

The Vicarage is situated in the pleasant village of Morchard Bishop in the heart of Mid Devon. Morchard Bishop is about 15 miles from Exeter There are regular bus services The closest railway station is Morchard Road, which is part of the Tarka Line.

The Vicarage includes:

Three reception rooms

Kitchen with utility room

Downstairs WC

4 Bedrooms

Family bathroom

Upstairs WC

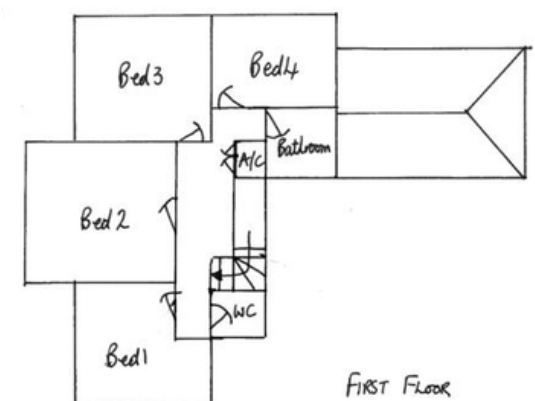
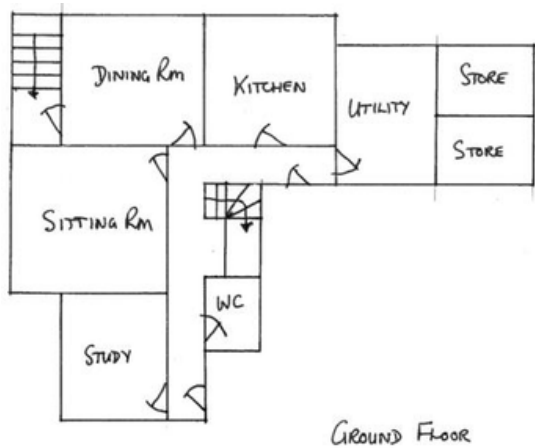
Air source heat pump

Cavity wall insulation

Newly fitted shower room

Plenty of parking

Large garden

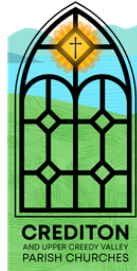


Front View



Rear View





We are earnestly praying for our new Team Vicar—
could God be calling you to pioneer, serve, and
grow alongside us in the new CREDITON and Upper
Creedy Valley Ministry Team?

PRAYGROWSERVE
Inspiring Faith in Devon **2035**